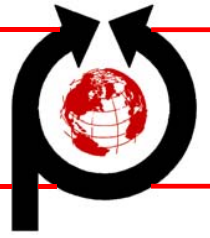


SECURITY CABINET

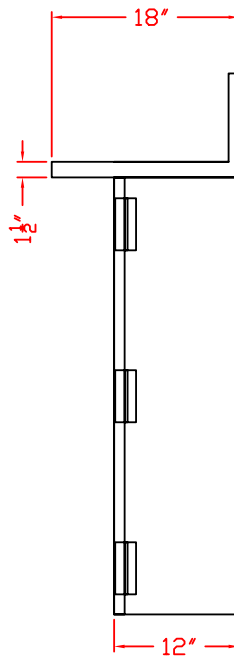
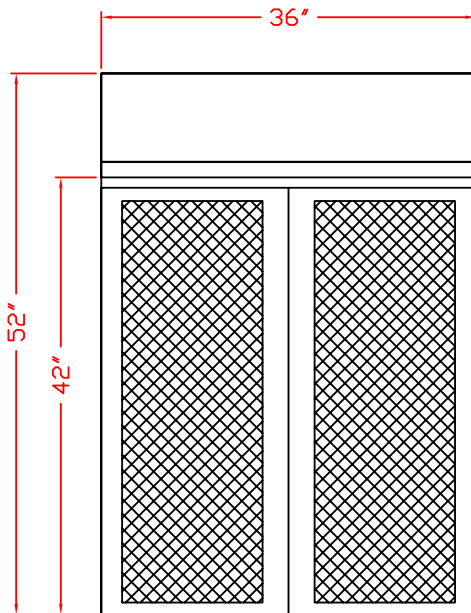
PERFECTION



**MODEL - ESC 2500HF
WITH TOP SHELF**

Perfection Equipment, Inc.
Perfecta Stainless Division

INSURES SECURITY OF POTABLE WATER FILTER SYSETEM



- ALL STAINLESS STEEL HEAVY DUTY CONSTRUCTION
- HEAVY GAGE FLATTENED, EXPANDED STEEL SCREENING ALLOWS INSTANT VISUAL INSPECTION
- FULL HEIGHT DOORS PROVIDE EASY ACCESS
- (2) HEAVY 14 GAGE STAINLESS STEEL LOCK HASPS
- 18" STAINLESS STEEL TOP SHELF

CUSTOM SIZE SECURITY CABINETS AVAILABLE TO MEET YOUR NEEDS



PERFECTION Equipment, Inc.

4259 Lee Avenue, Gurnee, Illinois 60031, Phone: 847-244-7200, Fax: 847-244-7205, Toll Free: 800-356-6301
Web Site: www.perfectequip.com, E-Mail: info@perfectequip.com

M:\Cut Sheets\PERFECTA\Security Cabinet.pdf - 01/19/06

