

# MODEL VH-1 GLYCOL CIRCULATOR

# PERFECTION



Perfection Equipment, Inc.  
Perfecta Stainless Division



## LINE RUNS

- Up to 500 feet
- Multiple dispensing locations

## CONSTANT RUNNING COMPRESSOR

- Longer compressor life
- Electronic control removes the necessity seasonal adjustments and prevents freeze ups
- Self-Starting after power failure

## REFRIGERATION SYSTEM

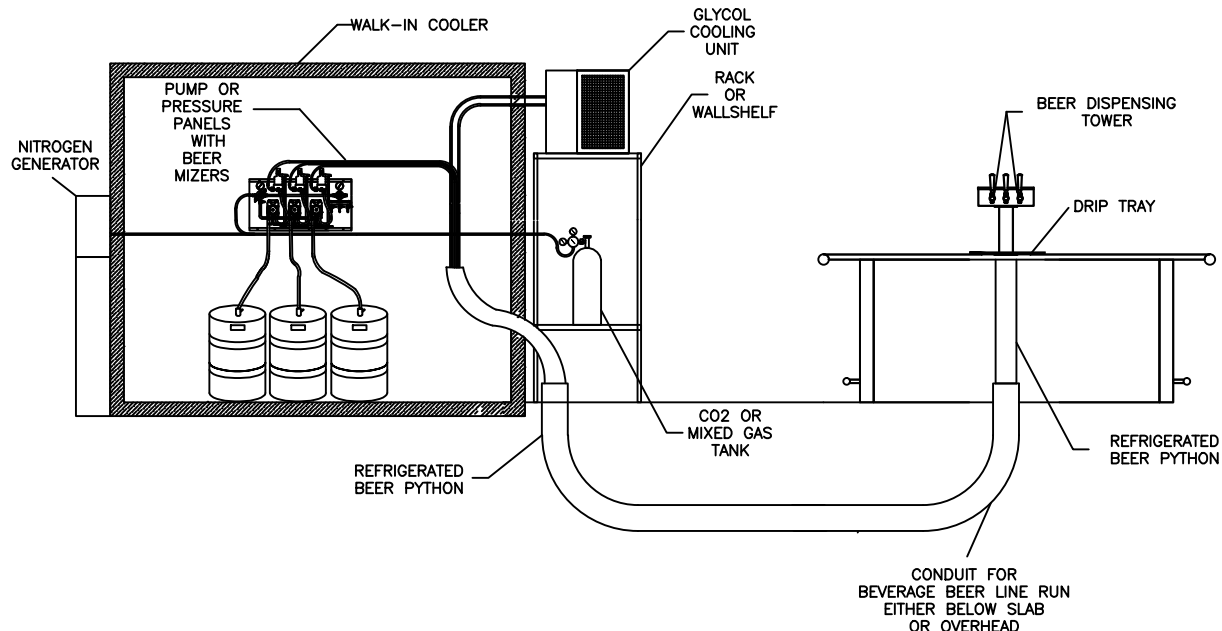
Includes a 3/4 horsepower continuous running compressor. An externally equalized thermostatic expansion valve (TXV) controls the flow of liquid refrigerant into the evaporator. A hot gas bypass valve (HGB) controls the refrigerant affect and adjusts the unit's horsepower to the load.

## COOLANT SYSTEM

The Coolant System consists of a water/glycol mixture of 2/1 with a reservoir tank incorporated within the unit to hold a small percentage of coolant. A 70 GPH brass pump draws the coolant from the bottom of the tank and propels it into the chiller coil. The coolant exits the coil and goes directly to the line run. Upon return from the line run the coolant goes directly to the reservoir tank completing the cycle.

## SERVICE AND INSTALLATION

Available from a national network of trained and authorized technicians.



PERFECTION Equipment, Inc.

4259 Lee Avenue, Gurnee, Illinois 60031, Phone: 847-244-7200, Fax: 847-244-7205, Toll Free: 800-356-6301  
Website: [www.perfectequip.com](http://www.perfectequip.com) Mail to: [sales@perfectequip.com](mailto:sales@perfectequip.com)

Rev. 09/06/2019



**MODEL VH-1**  
**GLYCOL CIRCULATOR**

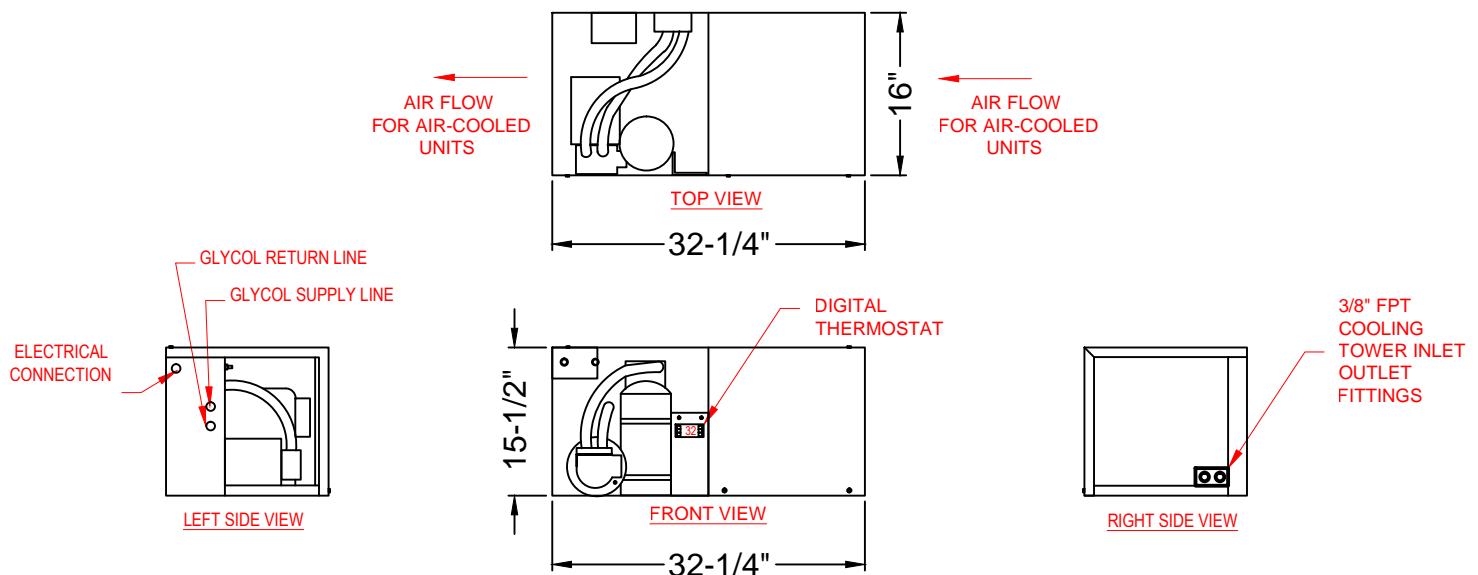
**PERFECTION**



Perfection Equipment, Inc.  
Perfecta Stainless Division

**MODEL VH-1 AVAILABLE IN**  
**AIR-COOLED OR WATER-COOLED**  
**115V OR 208V / 230V**

<b>PLUMBING / WATER-COOLED UNIT(S):</b> THE VALVED SUPPLY AND RETURN LINES FROM THE COOLING SYSTEM THAT ARE TO BE PROVIDED BY OTHERS NEED TO CONFORM TO THE FOLLOWING FOR EACH UNIT(S):					
<b>FLOW RATE @ &lt; 100°F</b>	MINIMUM 2 GPM		MAXIMUM 5 GPM		
<b>UNIT CONNECTIONS FOR COOLING SYSTEM</b>	3/8" FPT INLET		3/8" FPT OUTLET		
<b>SUPPLY PRESSURES</b>	MINIMUM 20 PSI		MAXIMUM 150 PSI		
<b>FLOW RATES @ 75°F</b>	IDLE LOAD 0.33 GPM		FULL LOAD 0.75 GPM		
<b>PRESSURE DROP</b>	IDLE LOAD 0.01 PSIG		FULL LOAD 0.03 PSIG		
<b>VENTILATION / AIR-COOLED UNIT(S):</b> REQUIRED VENTILATION PROVIDED BY OTHERS NEEDS TO ENSURE THAT THE TEMPERATURE WHERE THE UNIT(S) ARE LOCATED <b>DOES NOT EXCEED 85°F</b> . SIZE VENTILATION SYSTEM FOR EACH UNIT(S) BASED ON BTU'S FOR THE MODEL BELOW:					
3/4 H.P. VH-1	GLYCOL CIRCULATOR		HEAT OF REJECTION 9926 BTU / HR		
<b>ELECTRICAL: DEDICATED CIRCUIT(S):</b> FOR EACH UNIT (S) TO BE PROVIDED BY OTHERS BASED ON THE MODEL BELOW:					
3/4 H.P. VH-1	115V	AIR- COOLED	60 HZ, SINGLE PHSE 35.0 AMP	RLA 11.5	MCA 19.6
3/4 H.P. VH-1	115V	WATER- COOLED	60 HZ, SINGLE PHSE 35.0 AMP	RLA 13.0	MCA 21.9
3/4 H.P. VH-1	208 / 230V	AIR- COOLED	60 HZ, SINGLE PHSE 15.0 AMP	RLA 6.4	MCA 11.5
3/4 H.P. VH-1	208 / 230V	WATER- COOLED	60 HZ, SINGLE PHSE 15.0 AMP	RLA 7.0	MCA 11.6
<b>SHIPPING DIMENSIONS:</b> 34" X 19" X 18"					
<b>SHIPPING WEIGHT:</b> 138 lbs					



**PERFECTION Equipment, Inc.**

4259 Lee Avenue, Gurnee, Illinois 60031, Phone: 847-244-7200, Fax: 847-244-7205, Toll Free: 800-356-6301  
Website: [www.perfectequip.com](http://www.perfectequip.com) Mail to: [sales@perfectequip.com](mailto:sales@perfectequip.com)

