

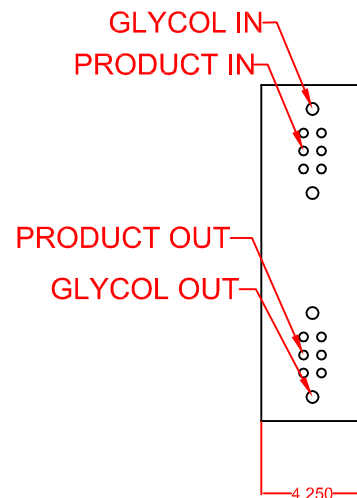
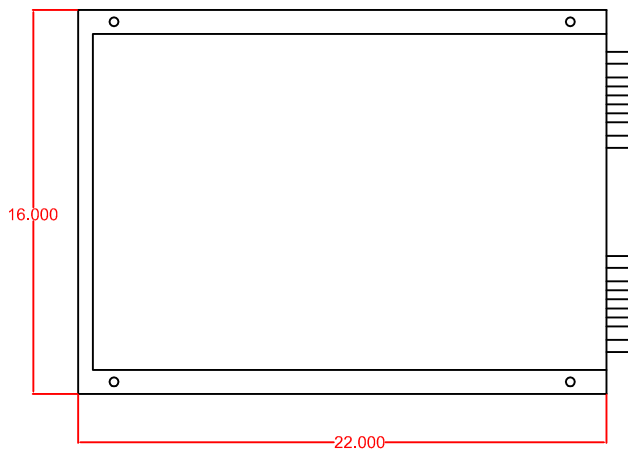
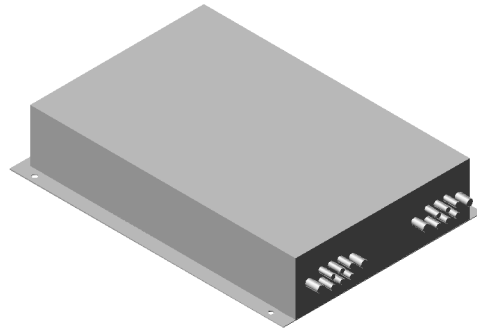
# FLASH CHILLER

# PERFECTION



Perfection Equipment, Inc.  
Perfecta Stainless Division

PE-FC6 (SHOWN)  
(6) CIRCUIT FLASH CHILLER



- USED IN CONJUNCTION WITH A PERFECTION GLYCOL CIRCULATOR
- SPECIALLY MOLDED COLD PLATE PROVIDES INDEPENDENT PRODUCT AND GLYCOL CIRCUITS
- CAN BE MOUNTED HORIZONTALLY OR VERTICALLY
- AVAILABLE IN (1) TO (6) CIRCUITS (6 CIRCUIT MODEL SHOWN)

SPECIFICATIONS:

- WEIGHT: 60lbs
- BEER FITTINGS:  $\frac{3}{8}$ " STAINLESS STEEL BARB
- GLYCOL FITTING:  $\frac{1}{2}$ " STAINLESS STEEL BARB
- GLYCOL & PRODUCT CIRCUITS: STAINLESS STEEL TUBING
- ENCLOSURE: STAINLESS STEEL
- NSF APPROVED



PERFECTION Equipment, Inc.

4259 Lee Avenue, Gurnee, Illinois 60031

Phone: 847-244-7200 Fax: 847-244-7205 Toll Free: 800-356-6301

Website: [www.perfectequip.com](http://www.perfectequip.com) Email: [sales@perfectequip.com](mailto:sales@perfectequip.com)

Rev. 09/06/2019